



Building a single market for green products – Environmental Footprint methods: outcomes of the pilot phase and the way forward

Michele Galatola

Environmental Footprint Team Leader

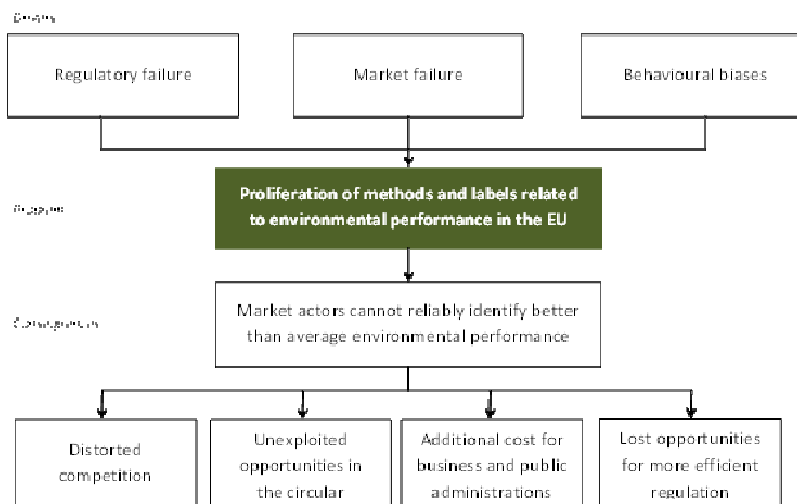
DG Environment –

B1 – Sustainable Production, Products &
Consumption



©HFD wallpapers

Which problems are we addressing?



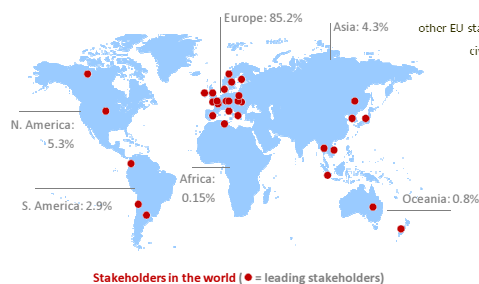
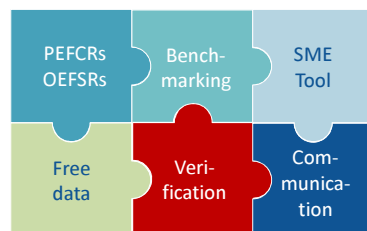
What are the consequences of the existing problems?



- Unfair competition
- Confusing claims
 - ✓ Obstacle in green private and public procurement
 - ✓ Obstacle in greening investment, insurance
 - ✓ Mistrust of consumers, obstacle in the growth of green markets
- Costs to companies that trade cross-border in the EU (and internationally) and that have to measure and communicate their environmental impacts in different ways for different markets.
- Environmental information not available along the supply chain in a consistent and harmonised way – unexploited opportunities in the circular economy

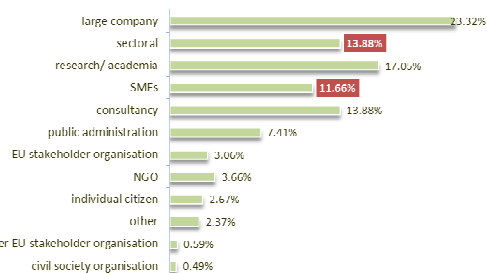
3

The pilot phase

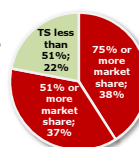


Participants (27 pilots):

2024 individual stakeholders (5322 participations)



267 leading stakeholders in the 23 active pilots



The EU market is behind the pilots:
73% of pilots have the majority of industry in the lead



EF pilot phase



Batteries and accumulators	Leather
Decorative paints	Thermal insulation
Hot & cold water pipe systems	Beer
Liquid household detergents	 Coffee
IT equipment	 Fish
Metal sheets	Dairy products
Non-leather shoes	Feed
Photovoltaic electricity generation	 Meat
 Stationary	Pet food
Intermediate paper products	Olive oil
T-shirts	Pasta
Uninterrupted power supplies	Wine
Retailer sector	Packed water
Copper sector	

The PEFCR




The PEFCR provides the following information:

- The list of EF compliant impact categories covered
- The most relevant impact category / life cycle stages / processes / elementary flows
- The environmental profile of 0.75 litres packaged wine, sold in EU (benchmark for still wine and sparkling wine)
- List of mandatory company-specific data
- List of default datasets to be used + data needs requirements

	Most relevant process	Other process
1. Process run by the company	Use company-specific data and create a company-specific dataset DQR≤1.6	Use default secondary dataset DQR≤3.0
2. Process not run but with access to company-specific information	Use company-specific activity data for transport and electricity DQR≤3.0	Use company-specific activity data for transport and electricity DQR≤4.0
3. Process not run by the company	Use a default secondary dataset DQR≤3.0	Use a default secondary dataset DQR≤4.0

Improvements from the methodological perspective




- How to define representative product/organisation
- Life Cycle Impact Assessment Methods
- Materiality principle (Hotspot procedure)
- Cut-off
- Climate change modelling
- Agricultural modelling
- Electricity modelling
- Transport modelling
- Infrastructure and equipment modelling
- Packaging modelling
- Use stage modelling
- End-of-Life modelling
- Data Quality Requirements
- Data Need Matrix

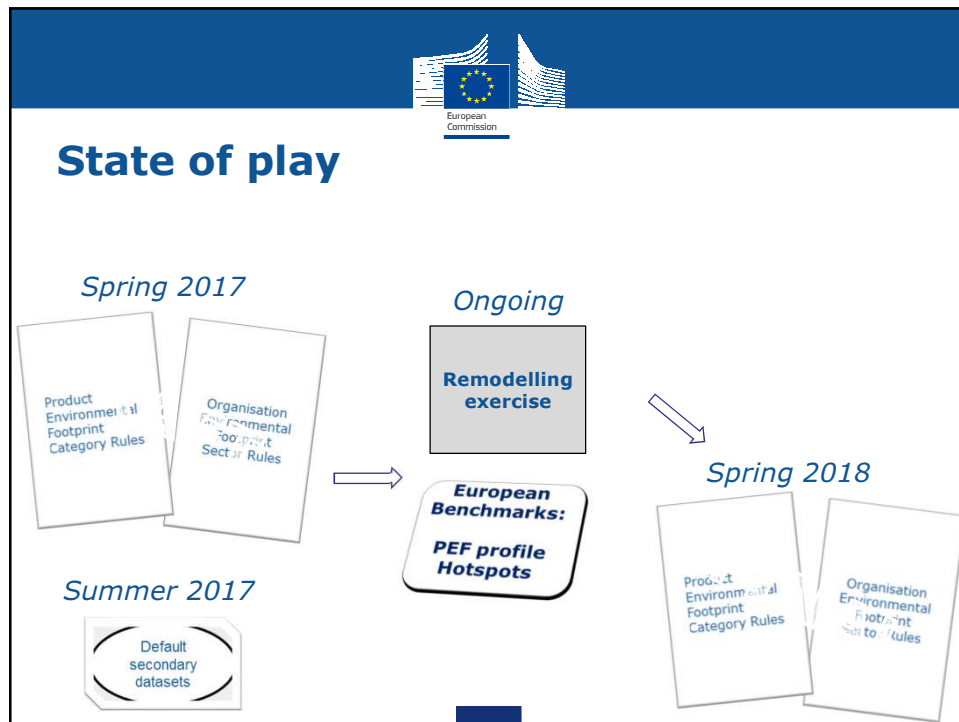
- Functional Unit
- Scope (granularity)
- Allocation
- Biodiversity
- Toxicity
- Normalisation
- Weighting

- Slaughterhouse modelling
- Classes of performance

Verification phase



	Red audit	Blue audit	Green audit
Description	Model and data verification Data verification limited to data owned by company	Model and data verification Data verification limited to data owned by company	Model and data verification Data verification extended to data owned by suppliers
	Distance audit	Audit on site at the company	Audit on site at the company and remote or on site supplier audit
	In one day	In two days	In two days and half a day with suppliers



Deliverables of the pilot phase

- Two updated methods to carry out PEF and OEF studies
- A clear Guidance to develop PEFCRs and OEFSRs
- 21 PEFCRs and 2 OEFSRs covering a variety of sectors and products
- More than 70 models used to define the representative products available for free to any user
- Clear rules to perform PEF/OEF verifications
- About 8000 freely available secondary LCI datasets
- An open source IT tool to perform PEF/OEF calculations for 4 PEFCRs
- E-learning packages in different languages
- Information on the effectiveness of different communication vehicles tested by the pilots and by the Commission

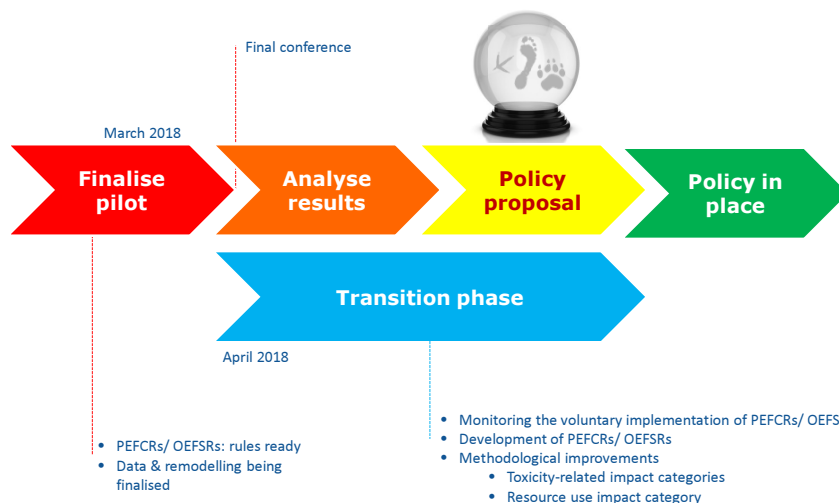
EF-based information system



Would allow:

- To design better products improving their environmental performance
- To transfer environmental information in a more standardised way
- To address the whole consumption market
- To allow citizens to make informed choices
- To allow Member States to introduce incentives/disincentives linked to the environmental performance
- To allow policy makers to have a picture of the potential environmental impacts related to certain product groups/sectors, setting targets and environmental objectives

Status & next steps





<http://ec.europa.eu/environment/eussd/smgp/>

<https://webgate.ec.europa.eu/fpfis/wikis/display/EUENVFP/>

env-environmental-footprint@ec.europa.eu

Twitter: @EU_EnvFootprint

